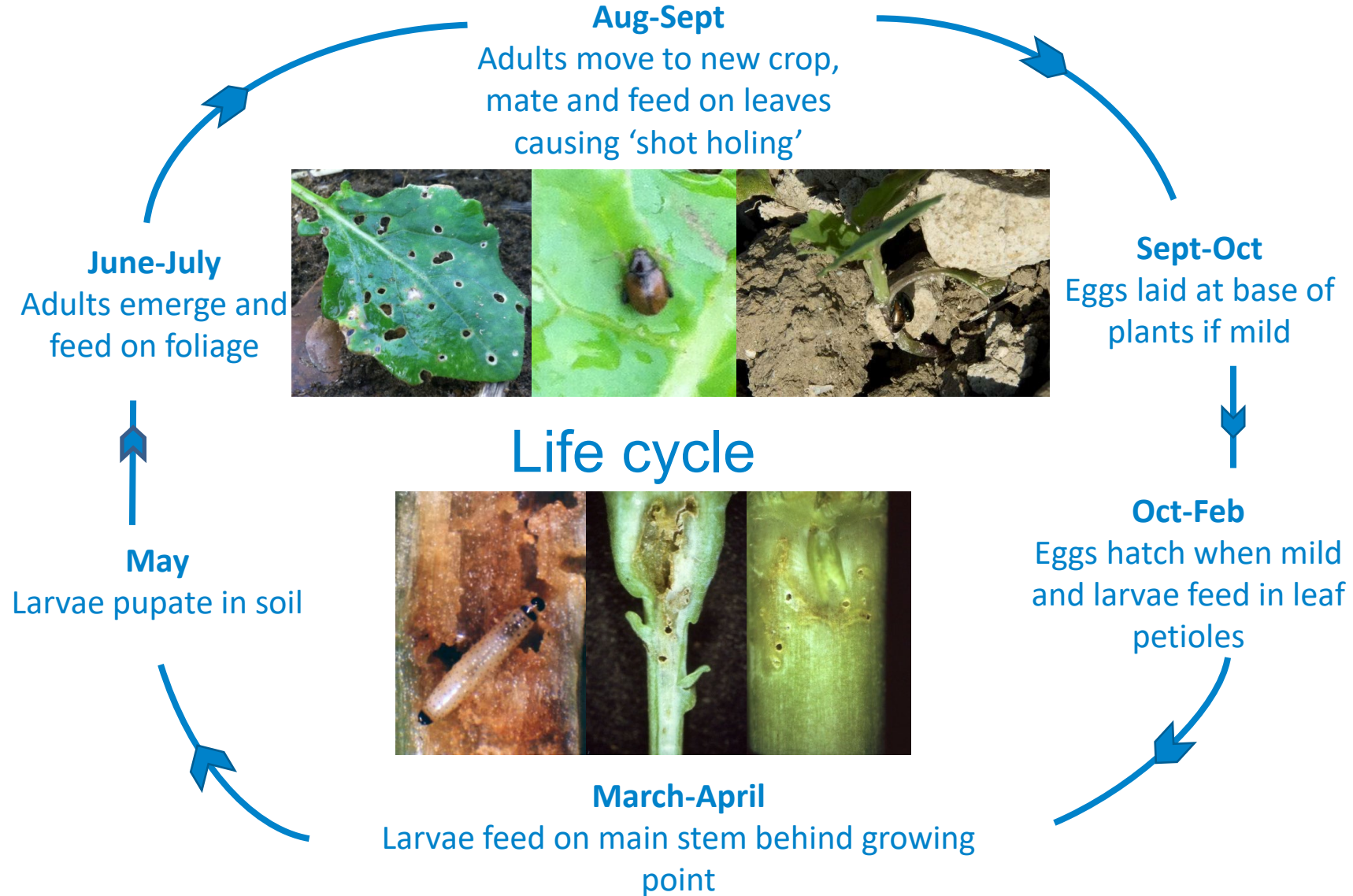


AHDB & United Oilseeds OSR Conference 2025: A Decade of Challenges, A Future of Opportunities

# Cabbage stem flea beetle – An overview of research to date

Dr Sacha White, Lead Crop Protection Scientist





Willis *et al.* 2020

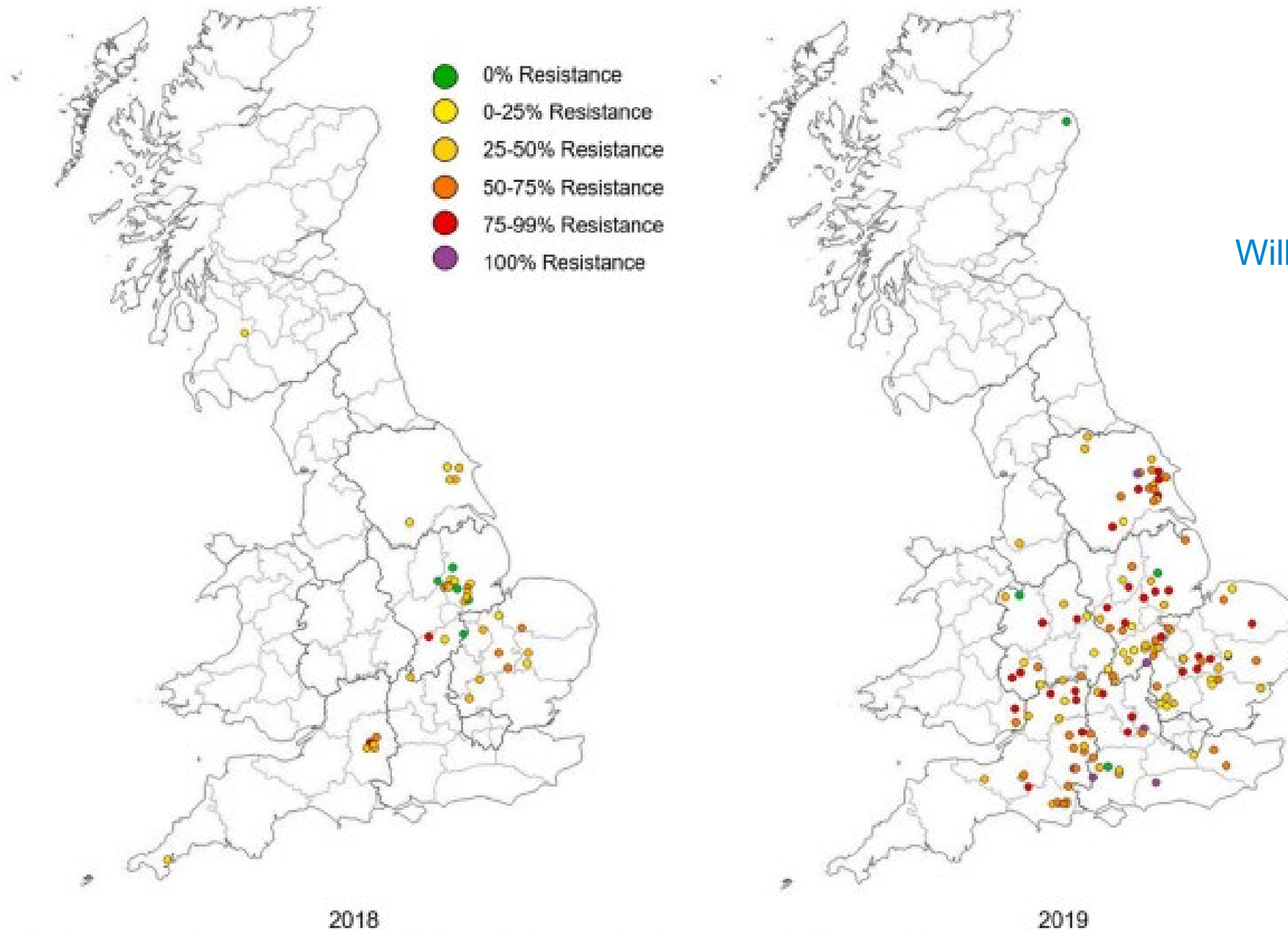


Fig. 1. Pyrethroid resistance in *P. chrysocephala* in the UK for 2018 and 2019. The maps were created using QGIS (version 3.0.3) and use a 6-category colour scale to show the level of resistance. The map is divided into counties (light grey borders) and regions (dark grey borders).

# Risk reduction - adults

- Rapid, vigorous and even establishment
  - Soil moisture, varietal choice, nutrition etc
- Sow date and seed rate
  - Early (before mid/late August) to tolerate damage
  - Late (after mid-Sept) to avoid adults
- Companion crops
- Trap crops (eg leaving volunteers)
- Organic amendments
- Post-harvest cultivations
- Pre-sowing cultivations
- Stubble/straw management



# Risk reduction - larvae

- Sow date
  - Later the better
  - Spread dates to spread risk
- Companion crops
- Trap crops (eg leaving volunteers)
- Seed rate
- Defoliation
- Pre-sowing cultivations



# Knowledge gaps



- Responsive treatments
  - Novel insecticides, biopesticides, synergists
- Cultural controls (e.g. brassica cover crops, cultivations etc)
- Stacking cultural control
- Decision support systems
  - Predict pest activity & pressure
  - Guide treatments timings
  - Guide cultural control
- Natural enemies
  - Contribution to control?
  - How to encourage?

# Conclusions

- Chemical control unreliable at best.
- Range of cultural controls available.
- Benefits variable and may not always be effective.
- No silver bullet. Several knowledge gaps remain.
- Knowledge exchange of available measures needs improving.
- Reliable CSFB control will be possible.



Credit: AHDB

Thank you for listening.



A vibrant landscape of a green field at sunset. The sun is low on the horizon, casting a warm glow over the scene. The sky is filled with colorful clouds, and the field is lush and green. A path leads from the foreground towards the horizon. In the foreground, there are several thin, white, wavy lines that appear to be part of a decorative graphic.

**‘Inspiring our farmers, growers  
and industry to succeed in a  
rapidly changing world’**

© Agriculture and Horticulture Development Board 2017 | All Rights Reserved